

# PUBLISHED VERSION

Zhaohui Gu, ... Charles G. Mullighan, ... et al.

**Genomic analyses identify recurrent MEF2D fusions in acute lymphoblastic leukaemia**

Nature Communications, 2016; 7:13331-1-13331-10

© The Author(s) 2016, This work is licensed under a Creative Commons Attribution 4.0 International License. The images or other third party material in this article are included in the article's Creative Commons license, unless indicated otherwise in the credit line; if the material is not included under the Creative Commons license, users will need to obtain permission from the license holder to reproduce the material. To view a copy of this license, visit <http://creativecommons.org/licenses/by/4.0/>

Originally published at:

<http://doi.org/10.1038/ncomms13331>

## PERMISSIONS

<http://creativecommons.org/licenses/by/4.0/>



### Attribution 4.0 International (CC BY 4.0)

This is a human-readable summary of (and not a substitute for) the [license](#). [Disclaimer](#).

#### You are free to:

**Share** — copy and redistribute the material in any medium or format

**Adapt** — remix, transform, and build upon the material for any purpose, even commercially.

The licensor cannot revoke these freedoms as long as you follow the license terms.



#### Under the following terms:



**Attribution** — You must give [appropriate credit](#), provide a link to the license, and [indicate if changes were made](#). You may do so in any reasonable manner, but not in any way that suggests the licensor endorses you or your use.

**No additional restrictions** — You may not apply legal terms or [technological measures](#) that legally restrict others from doing anything the license permits.

**1 August 2017**

<http://hdl.handle.net/2440/104503>

ARTICLE

Received 7 Feb 2016 | Accepted 23 Sep 2016 | Published 8 Nov 2016

DOI: 10.1038/ncomms13331

OPEN

# Genomic analyses identify recurrent *MEF2D* fusions in acute lymphoblastic leukaemia

Zhaohui Gu<sup>1</sup>, Michelle Churchman<sup>1</sup>, Kathryn Roberts<sup>1</sup>, Yongjin Li<sup>2</sup>, Yu Liu<sup>2</sup>, Richard C. Harvey<sup>3</sup>, Kelly McCastlain<sup>1</sup>, Shalini C. Reshmi<sup>4</sup>, Debbie Payne-Turner<sup>1</sup>, Ilaria Iacobucci<sup>1</sup>, Ying Shao<sup>1,2</sup>, I-Ming Chen<sup>3</sup>, Marcus Valentine<sup>5</sup>, Deqing Pei<sup>6</sup>, Karen L. Mungall<sup>7</sup>, Andrew J. Mungall<sup>7</sup>, Yussanne Ma<sup>7</sup>, Richard Moore<sup>7</sup>, Marco Marra<sup>7</sup>, Eileen Stonerock<sup>8,9,10</sup>, Julie M. Gastier-Foster<sup>8,9,10</sup>, Meenakshi Devidas<sup>11</sup>, Yunfeng Dai<sup>11</sup>, Brent Wood<sup>12</sup>, Michael Borowitz<sup>13</sup>, Eric E. Larsen<sup>14</sup>, Kelly Maloney<sup>15</sup>, Leonard A. Mattano Jr<sup>16</sup>, Anne Angiolillo<sup>17</sup>, Wanda L. Salzer<sup>18</sup>, Michael J. Burke<sup>19</sup>, Francesca Gianni<sup>20</sup>, Orietta Spinelli<sup>20</sup>, Jerald P. Radich<sup>21</sup>, Mark D. Minden<sup>22</sup>, Anthony V. Moorman<sup>23</sup>, Bella Patel<sup>24</sup>, Adele K. Fielding<sup>25</sup>, Jacob M. Rowe<sup>26</sup>, Selina M. Luger<sup>27</sup>, Ravi Bhatia<sup>28</sup>, Ibrahim Aldoss<sup>28</sup>, Stephen J. Forman<sup>29</sup>, Jessica Kohlschmidt<sup>30,31</sup>, Krzysztof Mrózek<sup>30</sup>, Guido Marcucci<sup>29</sup>, Clara D. Bloomfield<sup>30</sup>, Wendy Stock<sup>32</sup>, Steven Kornblau<sup>33</sup>, Hagop M. Kantarjian<sup>33</sup>, Marina Konopleva<sup>33</sup>, Elisabeth Paietta<sup>34</sup>, Cheryl L. Willman<sup>3</sup>, Mignon L. Loh<sup>35,36</sup>, Stephen P. Hunger<sup>37,38</sup> & Charles G. Mullighan<sup>1</sup>

Chromosomal rearrangements are initiating events in acute lymphoblastic leukaemia (ALL). Here using RNA sequencing of 560 ALL cases, we identify rearrangements between *MEF2D* (myocyte enhancer factor 2D) and five genes (*BCL9*, *CSF1R*, *DAZAP1*, *HNRNPUL1* and *SS18*) in 22 B progenitor ALL (B-ALL) cases with a distinct gene expression profile, the most common of which is *MEF2D-BCL9*. Examination of an extended cohort of 1,164 B-ALL cases identified 30 cases with *MEF2D* rearrangements, which include an additional fusion partner, *FOXJ2*; thus, *MEF2D*-rearranged cases comprise 5.3% of cases lacking recurring alterations. *MEF2D*-rearranged ALL is characterized by a distinct immunophenotype, DNA copy number alterations at the rearrangement sites, older diagnosis age and poor outcome. The rearrangements result in enhanced *MEF2D* transcriptional activity, lymphoid transformation, activation of *HDAC9* expression and sensitive to histone deacetylase inhibitor treatment. Thus, *MEF2D*-rearranged ALL represents a distinct form of high-risk leukaemia, for which new therapeutic approaches should be considered.

<sup>1</sup> Department of Pathology and Hematological Malignancies Program, St Jude Children's Research Hospital, 262 Danny Thomas Place, MS 342, Memphis, Tennessee 38105, USA. <sup>2</sup> Department of Computational Biology, St Jude Children's Research Hospital, Memphis, Tennessee 38105, USA. <sup>3</sup> University of New Mexico Cancer Center, Albuquerque, New Mexico 87106, USA. <sup>4</sup> The Research Institute, Nationwide Children's Hospital, Columbus, Ohio 43205, USA. <sup>5</sup> Cytogenetic Shared Resource, St Jude Children's Research Hospital, Memphis, Tennessee 38105, USA. <sup>6</sup> Department of Biostatistics, St Jude Children's Research Hospital, Memphis, Tennessee 38105. <sup>7</sup> Canada's Michael Smith Genome Sciences Centre, BC Cancer Agency, Vancouver, BC V5Z 4S6, Canada. <sup>8</sup> Department of Pathology and Laboratory Medicine, Nationwide Children's Hospital, Columbus, Ohio 43205, USA. <sup>9</sup> Department of Pathology, The Ohio State University College of Medicine, Columbus, Ohio 43210, USA. <sup>10</sup> Department of Pediatrics, The Ohio State University College of Medicine, Columbus, Ohio 43210, USA. <sup>11</sup> Department of Biostatistics, Colleges of Medicine and Public Health & Health Professions, University of Florida, Gainesville, Florida 32611, USA. <sup>12</sup> Department of Laboratory Medicine, University of Washington, Seattle, Washington 98195, USA. <sup>13</sup> Department of Pathology, Johns Hopkins Medical Institutions, Baltimore, Maryland 21287, USA. <sup>14</sup> Maine Children's Cancer Program, Scarborough, Maine 04074, USA. <sup>15</sup> Pediatric Hematology/Oncology/BMT, University of Colorado School of Medicine and Children's Hospital Colorado, Aurora, Colorado 80045, USA. <sup>16</sup> HARP Pharma Consulting, Mystic, Connecticut 06355, USA. <sup>17</sup> Children's National Medical Center, Washington, DC 20010, USA. <sup>18</sup> US Army Medical Research and Materiel Command, Fort Detrick, Maryland 21702, USA. <sup>19</sup> Medical College of Wisconsin, Milwaukee, Wisconsin 53226, USA. <sup>20</sup> Department of Hematology and Bone Marrow Transplantation, Papa Giovanni XXIII Hospital Piazza OMS 1 24127, Bergamo, Italy. <sup>21</sup> Fred Hutchinson Cancer Research Center, Seattle, Washington 98109, USA. <sup>22</sup> Princess Margaret Cancer Centre, University Health Network, Toronto, ON M5G 2M9, Canada. <sup>23</sup> Leukemia Research Cytogenetics Group, Northern Institute for Cancer Research, Newcastle University, Newcastle upon Tyne NE1 7RU, UK. <sup>24</sup> Department of Haemato-Oncology, Barts Cancer Institute, London EC1M 6BQ, UK. <sup>25</sup> Department of Hematology, UCL Cancer Institute, London WC1E 6BT, UK. <sup>26</sup> Hematology, Shaare Zedek Medical Center, Jerusalem 9103102, Israel. <sup>27</sup> Abramson Cancer Center, University of Pennsylvania, Philadelphia, Pennsylvania 19104, USA. <sup>28</sup> Division of Hematology and Oncology, Department of Medicine, The University of Alabama at Birmingham, Birmingham, Alabama 35294, USA. <sup>29</sup> Gehr Family Center for Leukemia Research, City of Hope, Duarte, California 91010, USA. <sup>30</sup> The Ohio State University Comprehensive Cancer Center, Columbus, Ohio 43210, USA. <sup>31</sup> Alliance for Clinical Trials in Oncology Statistics and Data Center, Mayo Clinic, Rochester, Minnesota 55905, USA. <sup>32</sup> University of Chicago Medical Center, Chicago, Illinois 60637, USA. <sup>33</sup> Department of Leukemia, The University of Texas MD Anderson Cancer Center, Houston, Texas 77030, USA. <sup>34</sup> Cancer Center, Montefiore Medical Center North Division, Bronx, New York 10467, USA. <sup>35</sup> Department of Pediatrics, Benioff Children's Hospital, San Francisco, California 94158, USA. <sup>36</sup> Helen Diller Family Comprehensive Cancer Center, San Francisco, California 94115, USA. <sup>37</sup> Children's Hospital of Philadelphia, Philadelphia, Pennsylvania 19104, USA. <sup>38</sup> Perelman School of Medicine at the University of Pennsylvania, Philadelphia, Pennsylvania 19104, USA. Correspondence and requests for materials should be addressed to C.G.M. (email: charles.mullighan@stjude.org).

**B** progenitor acute lymphoblastic leukaemia (B-ALL) is characterized by recurrent gross chromosomal alterations, including aneuploidy and rearrangements that deregulate oncogenes or result in the formation of chimeric fusion proteins that have functional properties distinct from their non-rearranged counterparts. Such fusion proteins, including ETV6-RUNX1 and TCF3-PBX1, and those involving PAX5, KMT2A (MLL) and tyrosine kinases such as BCR-ABL1, are typically acquired early in leukaemogenesis and drive tumour formation by perturbing cellular pathways including haematopoietic development, tumour suppression, kinase signalling and chromatin remodelling<sup>1,2</sup>. Identification of these rearrangements is important in the management of ALL, as several are associated with treatment outcome and/or may serve as therapeutic targets.

The prevalence of recurring rearrangements varies significantly according to age and in part explains the inferior outcome of ALL in older individuals<sup>3,4</sup>. For example, rearrangements associated with favourable outcome such as ETV6-RUNX1 are frequent in younger children compared with older children, whereas BCR-ABL1 and rearrangements involving CRLF2 and tyrosine kinases observed in Philadelphia chromosome-like (Ph-like) ALL are more common with increasing age<sup>3</sup>. However, the genetic basis of up to 30% of ALL cases is unknown.

To identify chromosomal rearrangements in B-ALL cases lacking a known recurring sentinel alteration, we performed transcriptome sequencing (RNA sequencing (RNAseq)) of 560 cases and recurrence testing in a cohort of 1,164 cases. We identified multiple new targets of rearrangement, with rearrangements of *MEF2D* and *ZNF384* defining subtypes with distinct transcriptional signatures. In total, a group of 42 cases are discovered with *MEF2D* rearranged to *BCL9*, *CSF1R*, *DAZAP1* (DAZ (deleted in azoospermia)-associated protein 1), *HNRNPUL1* (heterogeneous nuclear ribonucleoprotein U-like 1), *SS18* (synovial sarcoma translocation, chromosome 18) or *FOXJ2* (Forkhead Box J2). These rearrangements dysregulate expression of *MEF2D* target genes and, by increasing expression of *HDAC9*, create a vulnerability to targeting with histone deacetylase (HDAC) inhibitors.

## Results

### RNAseq identifies *MEF2D* fusions in a novel B-ALL subgroup.

The 560 cases examined by RNAseq enrolled on the Children's Oncology Group (COG) trials included AALL0232 ( $N=216$ ), AALL0331 ( $N=65$ ), AALL0932 ( $N=61$ ), AALL1131 ( $N=92$ ), P9906 ( $N=1$ ) and adults (age of diagnosis  $\geq 18$ ,  $N=122$ ) or children (age of diagnosis  $< 18$ ,  $N=3$ ) with B-ALL enrolled on various non-COG protocols (Supplementary Data 1).

This analysis identified multiple new recurring targets of rearrangement, including *MEF2D*, *NUTM1* and *ZNF384*, and new partners of rearrangement with known genes such as *PAX5* and *IGH* (Supplementary Data 1). We identified 22 cases (3.9%) with rearrangements of *MEF2D* at chromosome 1q21–22, encoding myocyte enhancer factor 2D (Table 1, Fig. 1, Supplementary Data 2 and Supplementary Table 1), representing 15 of 367 (4.1%) childhood cases (up to age 15 years), 4 of 62 (6.5%) adolescent cases (age 16–20 years), 2 of 73 (2.7%) young adults and a single case in 56 older adults. Five *MEF2D* fusion partners were identified: *BCL9* (16 cases), *HNRNPUL1* (3 cases), *DAZAP1*, *CSF1R* and *SS18* (1 case each). Each fusion was confirmed by reverse transcription and PCR (RT-PCR) followed by Sanger sequencing (Fig. 1, Supplementary Fig. 1 and Supplementary Table 2). In each case, the amino terminus of *MEF2D* was fused in frame with the carboxy-terminal portion encoded by the partner gene.

The most common *MEF2D* rearrangement was *MEF2D-BCL9*, which was present in 16 cases. Four isoforms of this fusion were

identified, involving exons 5 or 6 of *MEF2D* (NM\_001271629) fused in-frame to exons 9 or 10 of *BCL9* (NM\_004326; Supplementary Data 2). *MEF2D-BCL9* rearrangement was associated with deregulated expression of the C terminus of *BCL9* distal to the rearrangement breakpoint (Supplementary Fig. 2). No fusions deregulating expression of full-length *BCL9*, such as *IGH-BCL9* (ref. 5), were identified. Only one isoform of the *MEF2D-HNRNPUL1* fusion was identified, involving exon 8 of *MEF2D* and exon 12 of *HNRNPUL1*. Expression of the fusion proteins in patient leukaemic cells was confirmed by immunoblotting (Supplementary Fig. 3) and the disruption of *MEF2D* and *MEF2D-BCL9* rearrangements were shown to be present in the majority of leukaemic cells by fluorescence *in situ* hybridization (FISH), consistent with the fusions being leukaemia-initiating events acquired early in leukaemogenesis (Supplementary Fig. 4). Several patterns of probe hybridization were identified, consistent with diverse mechanisms of rearrangement, including insertion of the fusion into a different chromosome (for example, SJBALLO20667), interstitial insertion at chromosome 1q (SJBALLO20703) and reciprocal rearrangement (SJBALLO20987).

**Genomic alterations of *MEF2D*-rearranged cases.** *MEF2D* and *BCL9* are both located at 1q21.2–22 and the common pattern of interstitial insertion resulted in these rearrangements being cryptic on cytogenetic analysis. We observed that many rearrangements were accompanied by copy number alterations at the *MEF2D* and partner gene loci. Ten cases harbouring *MEF2D* rearrangements had single-nucleotide polymorphism (SNP) microarray data available (Table 1), with eight of ten exhibiting focal gains or loss of DNA at the partner genes (*MEF2D*, *BCL9*, *DAZAP1* and *HNRNPUL1*; Supplementary Fig. 5). The genomic structure of the *MEF2D-BCL9* rearrangements was confirmed in two cases by whole genome sequencing (Supplementary Fig. 6).

Additional genetic alterations identified in *MEF2D*-rearranged cases included *IKZF1* alterations in three cases, including exons 4–8 deletions in two cases and exons 4–7 deletion in one case (resulting in the expression of the dominant negative IK6 isoform). Mutational analysis of RNAseq data showed that 6 of 16 *MEF2D-BCL9* cases harboured activating *NRAS* mutations, although these were frequently subclonal and thus secondary events in leukaemogenesis (Supplementary Data 1 and Supplementary Table 3). Analysis of Ras mutations (*NRAS*, *KRAS*, *NF1* and *PTPN11*) across the RNAseq cohort revealed a similar prevalence of Ras mutations as other subtypes of ALL previously reported to be enriched for Ras mutations (for example, hyperdiploid and *MLL*-rearranged ALL (Supplementary Fig. 7)).

### The transcriptional signatures of *MEF2D* and *ZNF384* ALL.

Although RNAseq data were obtained from diverse library preparation (total versus messenger RNA, unstranded versus stranded) and sequencing (75 bp versus 100 bp paired end) methods, reproducible clustering of *MEF2D*-rearranged cases was observed in principal component analysis and hierarchical clustering (Fig. 2a and Supplementary Figs 8–10), with the exception of one sample harbouring an *MEF2D-CSF1R* fusion, which clustered with Ph-like ALL cases. Rearrangements of *CSF1R*, encoding the macrophage colony-stimulating factor receptor, are observed in Ph-like ALL and result in activation of tyrosine kinase signalling pathways inhibited by kinase inhibitors such as imatinib and dasatinib<sup>3,6,7</sup>. Thus, the clustering of this sample with other Ph-like ALL cases distinct from other *MEF2D*-rearranged cases was not surprising. Supervised analysis of *MEF2D*-rearranged cases identified a distinct gene expression

**Table 1 | Clinical and genetic features of patients with *MEF2D*-rearranged ALL.**

Sample ID	Fusion	Age	WBC	Sex	Karyotype	SNP results
SJBALLO13388	<i>MEF2D-BCL9</i> <sup>a</sup>	10.0	45.4	Female	NA	NA
SJBALLO16252	<i>MEF2D-BCL9</i> <sup>a</sup>	14.0	42	Female	NA	NA
SJBALLO16291	<i>MEF2D-BCL9</i> <sup>a</sup>	10.0	23	Male	NA	NA
SJBALLO20667	<i>MEF2D-BCL9</i> <sup>a</sup>	14.8	39	Female	NA	No <i>MEF2D</i> change
SJBALLO20703	<i>MEF2D-BCL9</i> <sup>a</sup>	14.2	38	Female	46,XX,del(9)(p22)x2[10]/45,idem,-del(9),+der(9;17)(q10;q10),-17[6]/46,idem,-del(9),+mar[4]	No <i>MEF2D</i> change
SJBALLO20711	<i>MEF2D-BCL9</i> <sup>b</sup>	13.9	96.4	Male	NA	Focal gains at <i>MEF2D</i> and <i>BCL9</i>
SJBALLO20906	<i>MEF2D-BCL9</i> <sup>b</sup>	15.1	9.1	Male	NA	Deletion between <i>BCL9</i> and <i>MEF2D</i>
SJCOGALLO10235	<i>MEF2D-BCL9</i> <sup>a</sup>	13.5	82.7	Female	46,XX,dup(1)(q24q31),i(7)(q10),del(9)(p21p24),add(18)(q21)[8]/46,XX,dup(1)(q24q31),add(9)(p22),del(9)(p21p24),del(10)(p13p14)[7]/46,XX[4]	NA
SJBALLO14169	<i>MEF2D-BCL9</i> <sup>b</sup>	21.3	20.9	Female	46,XX,del(12)(p11.2)[2]/45,XX,-9,del(12)(p11.2)[15]/45,XX,-11[1]	NA
SJBALLO20917	<i>MEF2D-HNRNPUL1</i>	11.9	3.5	Female	46,XX,del(13)(q12q32)[24]/46,XX[6]	Focal gains at <i>MEF2D</i> and <i>HNRNPUL1</i>
SJBALLO20967	<i>MEF2D-BCL9</i> <sup>b</sup>	16.3	27	Female	46,X,t(X;6;15)(q22;p21;q13),-2,add(9)(p13),del(9)(p13p22),der(?)t(?)t(?)q13[4]/89,idemx2,-7,-del(9),-11[5]/46,XX[11]	Focal gains at <i>MEF2D</i> and <i>BCL9</i>
SJBALLO20964	<i>MEF2D-HNRNPUL1</i>	17.6	10.8	Male	46,XY,dup(2)(q31q33),del(12)(p11.2)[22]	Focal gain at <i>HNRNPUL1</i>
SJBALLO16275	<i>MEF2D-BCL9</i> <sup>c</sup>	15.0	61.9	Male	NA	NA
SJBALLO16306	<i>MEF2D-BCL9</i> <sup>c</sup>	12.0	61.9	Female	NA	NA
SJCOGALLO10915	<i>MEF2D-BCL9</i> <sup>c</sup>	14.0	7.4	Male	48,XY,add(3)(q11.2),+8,del(8)(p11.1),add(12)(p11.2),+mar[11]/94,idemx2,-8,-8,-21,+mar[6]/46,XY[2]	NA
SJCOGALLO10884	<i>MEF2D-BCL9</i> <sup>d</sup>	13.8	107	Female	46,XX,add(9)(p13)[1]/46,idem,dup(1)(q12q42)[5]/46,XX[14]	NA
SJBALLO20987	<i>MEF2D-BCL9</i> <sup>a</sup>	18.5	22.5	Female	46,XX,del(9)(p13),t(10;14)(q23;q11.2)[17]/46,XX[1]	No <i>MEF2D</i> change
SJBALLO21005	<i>MEF2D-BCL9</i> <sup>a</sup>	17.6	9.4	Male	NA	Deletion at <i>MEF2D</i> , and adjacent gain to <i>BCL9</i>
SJCOGALLO10859	<i>MEF2D-HNRNPUL1</i>	7.6	21.8	Female	46,XX,add(7)(q11.2),add(9)(p13)[8]/46,XX[5]	NA
SJBALLO16286	<i>MEF2D-SS18</i>	9.0	28.1	Female	NA	NA
SJBALLO20141	<i>MEF2D-DAZAP1</i> <sup>*</sup>	35.0	5.4	Male	NA	Gain from <i>MEF2D</i> to 1cent; Gain from 19p to <i>DAZAP1</i>
SJBALLO15117	<i>MEF2D-CSF1R</i> <sup>†</sup>	48.0		Female	NA	NA

NA, not available; SNP, single-nucleotide polymorphism.

Age is shown in years. WBC, peripheral blood leukocyte count at diagnosis, shown as  $10^9/l^{-1}$ .

Four different isoforms of *MEF2D-BCL9* fusions were detected in 16 samples, as denoted by the superscript letters a-d.

\*Previously reported<sup>26</sup>.

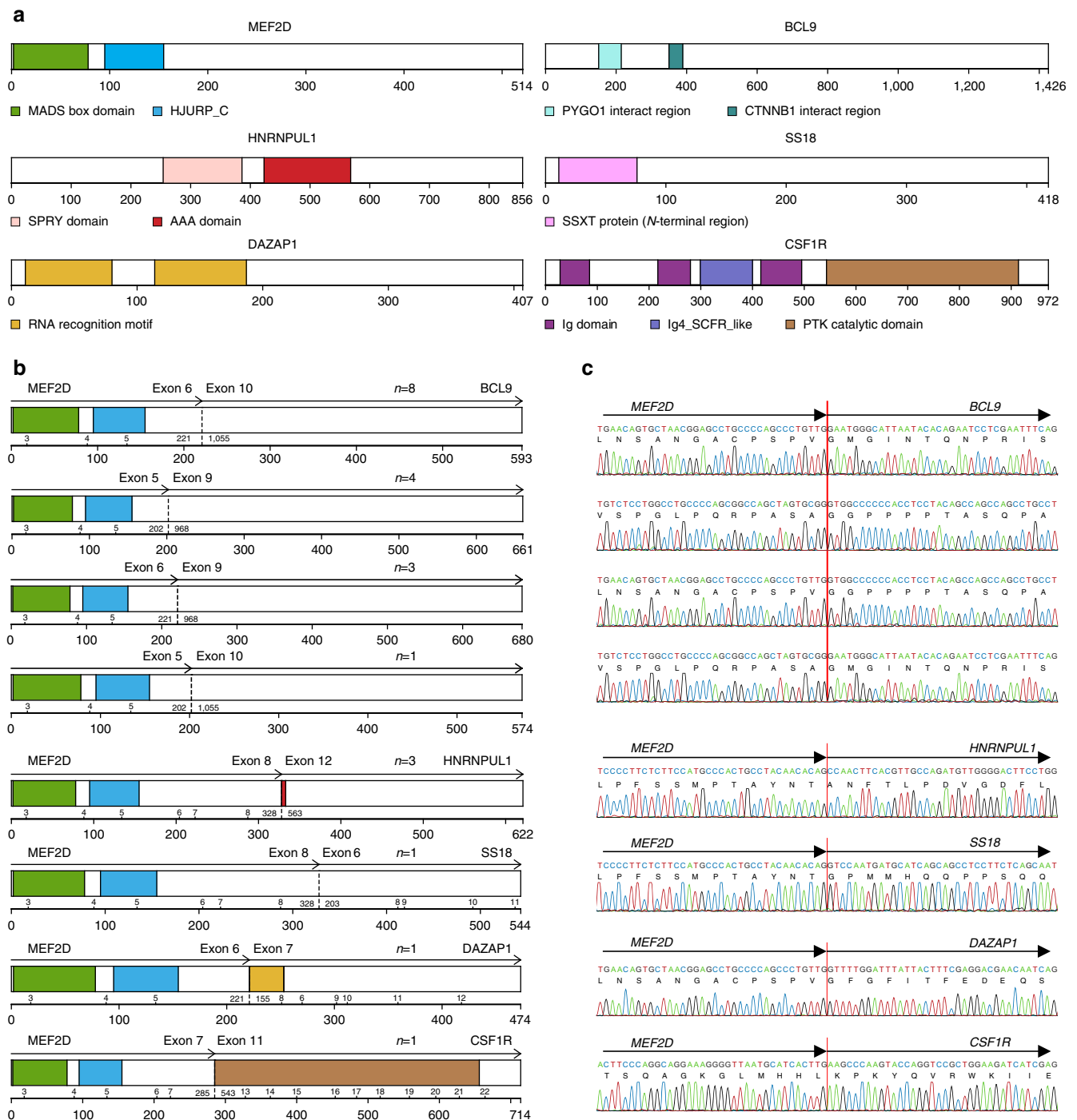
†Previously reported<sup>2</sup>.

signature with substantial overlap between cases sequenced using stranded and unstranded sequencing methods (Fig. 2b and Supplementary Data 3–5).

Analysis of outlier gene expression in high-risk childhood ALL previously identified eight ALL subgroups, several of which harboured recurring genetic alterations including rearrangement of *KMT2A* (*MLL*) (ROSE group 1, R1), *TCF3-PBX1* (R2), deregulation of *ERG* (R6) and Ph+/Ph-like ALL (R8), and so on<sup>8</sup>. Analysis of 1,164 childhood, adolescent and young adult ALL cases with available microarray gene expression data identified 31 cases in the R3 subgroup that lacked known chromosomal rearrangements (Supplementary Fig. 11), 10 of which were in the discovery RNAseq cohort and had *MEF2D* rearrangements (Supplementary Data 1). RT-PCR identified known *MEF2D* rearrangements in 19 of the 20 remaining cases (Supplementary Data 6 and Supplementary Fig. 12). One of the two remaining cases had sufficient material for RNAseq, which identified a novel chimeric in-frame fusion of *MEF2D* exon 8 to exon 7 of the forkhead transcription factor gene, *FOXJ2* (Supplementary Data 6). Taken together, 42 *MEF2D*-rearranged cases were discovered in this study that exhibit a distinct gene

expression profile. Moreover, RNAseq identified 20 cases with rearrangements of *ZNF384* to 6 different partners (*ARID1B*, *CREBBP*, *EP300*, *SMARCA2*, *TAF15* and *TCF3*), which were also associated with a distinct gene expression profile and exclusively observed in the R5 group (Supplementary Data 7 and Supplementary Fig. 13). Together, these findings suggest that *MEF2D* and *ZNF384* rearrangements are founding alterations of the R3 and R5 subgroups, respectively, and represent distinct subtypes of B-ALL.

To explore the deregulated gene expression characteristics of *MEF2D*-rearranged ALL, we perform the gene set enrichment analysis (GSEA) and pathway analysis and demonstrated that *MEF2D*-rearranged cases exhibited a gene expression profile of a later maturational stage than other subtypes of ALL (Supplementary Data 8 and 9). We did observe negative enrichment of WNT signalling, consistent with the observation that the *MEF2D-BCL9* fusion removes the  $\beta$ -catenin-interacting domains of *BCL9*. The clustering of gene expression profiles *MEF2D*-rearranged cases irrespective of C-terminal fusion partner suggests that deregulation of *MEF2D* function may in part mediate leukaemogenesis. To examine this, we compared the

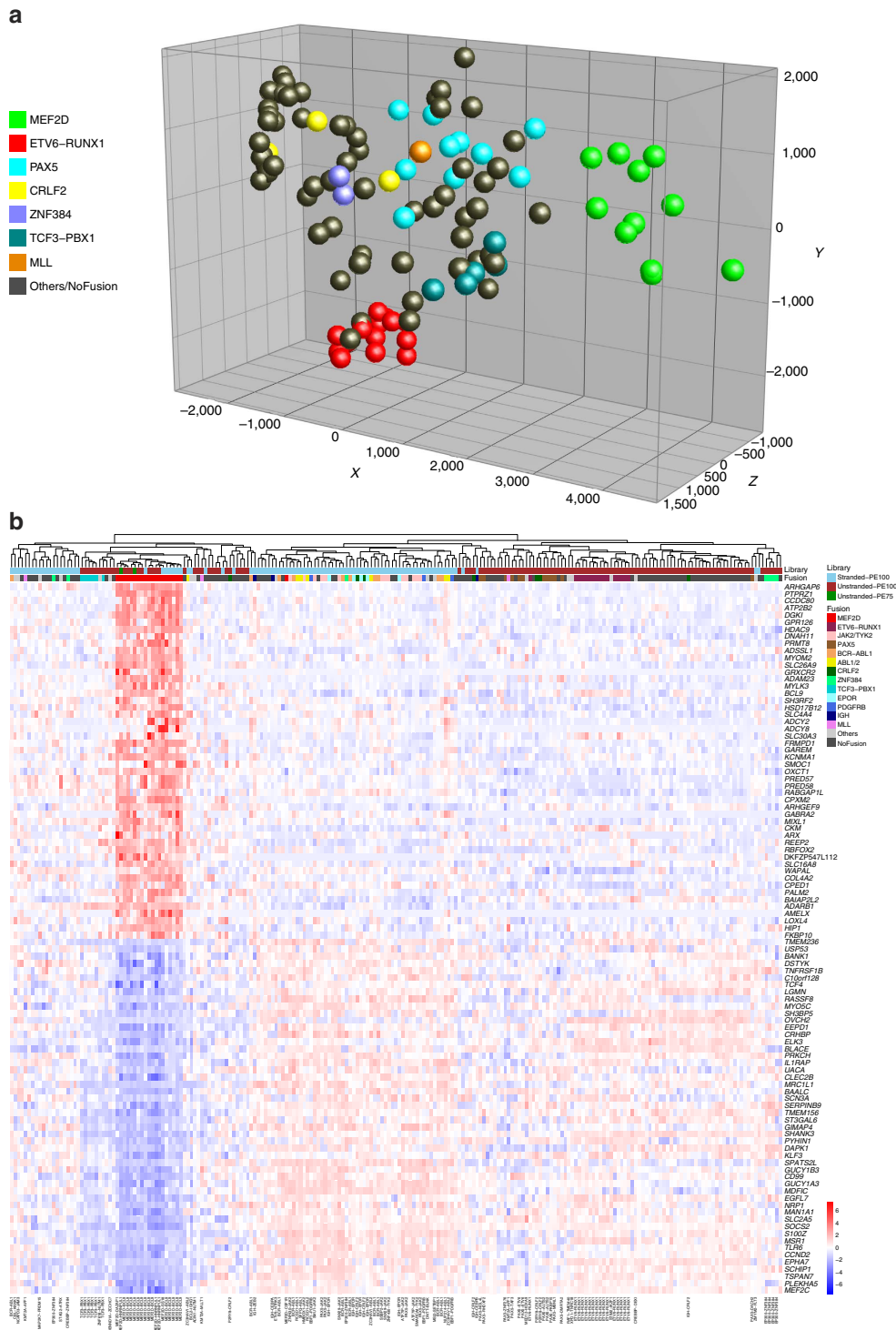


**Figure 1 | *MEF2D* rearrangements in ALL.** (a) Protein structure of wild-type *MEF2D* and fusion partners, (b) protein structure of each fusion protein and (c) electropherograms showing the results of RT-PCR and Sanger sequence (see also Supplementary Fig. 1). Four *MEF2D*-*BCL9* isoforms were identified in 16 cases, with breakpoints involving exons 5 or 6 of *MEF2D* fused in frame to exons 9 or 10 of *BCL9*. Rearrangements involving *MEF2D* and other four fusion partners were identified in six samples. *MEF2D*-*DAZAP1* and *MEF2D*-*CSF1R* fusions have previously been reported<sup>3,26</sup>. Protein region annotation: MADS box, MEF2 (myocyte enhancer factor 2)-like/Type II subfamily of MADS; HJURP\_C, Holliday junction regulator protein family C-terminal repeat. Ig domain, immunoglobulin domain; Ig4\_SCFR\_like, fourth Ig-like domain of stem cell factor receptor; PTK catalytic domain, tyrosine kinase catalytic domain.

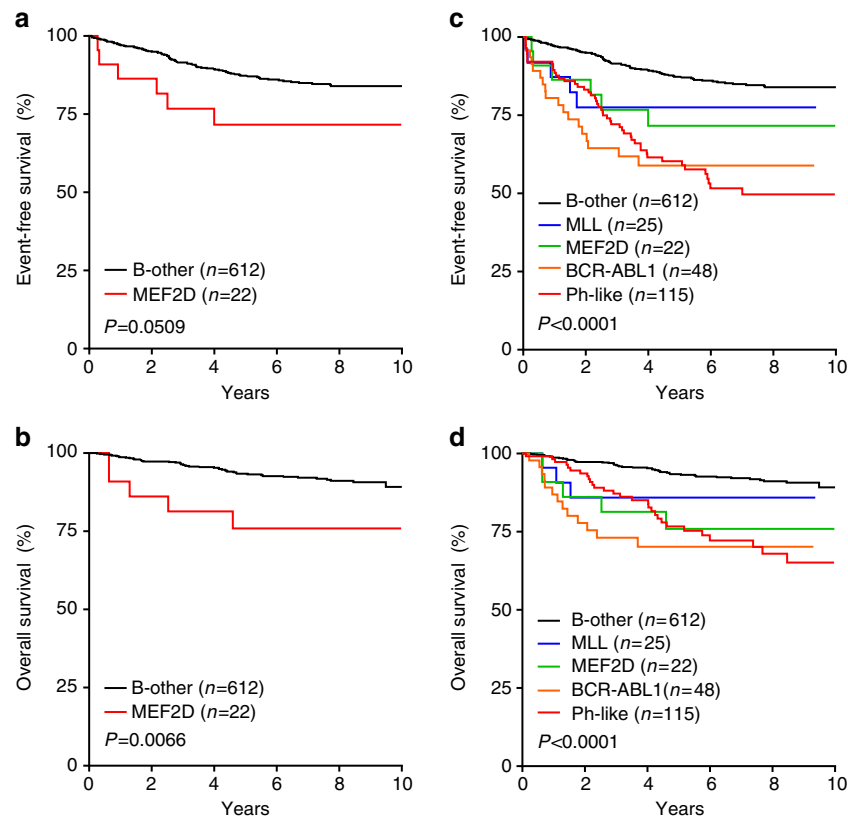
gene expression profile of *MEF2D*-rearranged ALL with existing chromatin immunoprecipitation and sequencing and RNAseq data sets for *MEF2D* studies in muscle, retinal and lymphoid cells, and observed partial overlap with known *MEF2D*-bound genes. Notably, *HDAC9*, one of the top upregulated genes was consistently represented in the data sets (Supplementary Data 10). *HDAC9* is a direct transcriptional target of MEF2 and acts to inhibit the transcriptional activity of *MEF2C*<sup>9</sup>, consistent with the

striking downregulation of this gene in *MEF2D*-rearranged ALL (Supplementary Data 3–5 and Supplementary Figs 14 and 15).

**Clinical and pathological features of *MEF2D* ALL.** The median age of *MEF2D*-rearranged cases at diagnosis was 14.0 years (range 4.8–48.0) for the 42 *MEF2D* rearranged cases and 14.0 years (range 4.8–21.3) for 29 *MEF2D*-*BCL9* cases with approximately equal occurrence in male and female patients (Supplementary



**Figure 2 | MEF2D-rearranged ALL cases have a distinct gene expression profile.** (a) Principal component analysis of samples subjected to unstranded RNAseq data, showing clustering of MEF2D-rearranged cases. A full list of cases and rearrangements identified by RNAseq is provided in Supplementary Data 1. (b) The gene expression signature for MEF2D-rearranged ALL was determined by comparing 19 MEF2D fusion samples (excluding 2 cases that failed quality-control threshold for gene expression analysis and one MEF2D-CSF1R rearranged case) and 199 control samples through Wald’s test and Benjamini–Hochberg adjustment. Genes with adjusted *P*-value < 0.01 are provided in Supplementary Data 3. The top 50 upregulated and top 50 downregulated genes (based on the adjusted *P*-value) were selected to perform supervised clustering and shown in the order from most significant upregulated genes (top) to the most downregulated ones (bottom). Stranded-PE100, total stranded paired-end 100 bp RNAseq; unstranded-PE100, unstranded mRNA paired-end 100 bp RNAseq; unstranded-PE75, unstranded mRNA paired-end 75 bp RNAseq. MEF2D, fusions involving MEF2D; JAK2/TYK2, fusions involving JAK2 or TYK2; PAX5, fusions with PAX5 as the N-terminal fusion partner with non-kinase genes; ABL1/2, fusions with ABL1 or ABL2 observed in Ph-like ALL; CRLF2, IGH-CRLF2 or P2RY8-CRLF2 fusions; ZNF384, fusions involving ZNF384 as the C-terminal fusion partner; EPOR, fusions deregulating EPOR observed in Ph-like ALL; PDGFRB, fusions involving PDGFRB; IGH, IGH fusions except IGH-CRLF2 and IGH-EPOR; MLL, fusions involving KMT2A(MLL) gene.



**Figure 3 | Poor outcome of *MEF2D*-rearranged ALL.** The event-free (a,c) and overall survival (b,d) outcome of *MEF2D*-rearranged cases is compared with that of B-precursor ALL cases lacking known recurring chromosomal rearrangements (a,b) and key genetic subtypes (c,d) of B-ALL in the COG AALL0232 study.

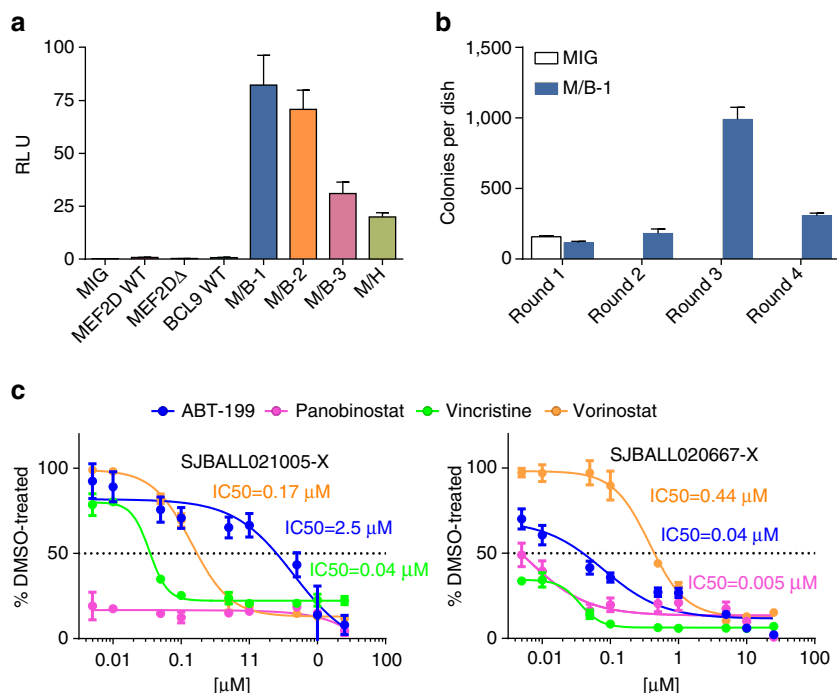
Data 1 and 6). The immunophenotype of *MEF2D*-rearranged ALL was distinct from other subtypes of B-ALL and was characterized by weak or absent expression of CD10 and high expression of CD38. Low or absent expression of CD10 is a feature of *MLL*-rearranged ALL and high CD38 expression is typically seen in normal, regenerating lymphoid cells (haematogones), but these features are otherwise uncommon in B-cell precursor ALL (Supplementary Table 4).

The outcome of *MEF2D*-rearranged ALL was inferior to that of other ALL subtypes. Although the number of *MEF2D*-rearranged cases was small compared with several other subtypes, analysis of children with ALL enrolled on the AALL0232 study of high-risk pre-B ALL showed that the 5-year event-free survival (EFS) of *MEF2D*-rearranged ALL was 71.6% (s.e.  $\pm$  10.2%,  $n = 22$ ), compared with that of *BCR-ABL1* ( $59.9 \pm 8.9\%$ ,  $n = 48$ ), *MLL* ( $77.5 \pm 10.6\%$ ,  $n = 25$ ), Ph-like ( $60.3 \pm 5.5\%$ ,  $n = 115$ ) and other pre-B ALL cases ( $87.3 \pm 1.6\%$ ,  $n = 612$ ; log rank test  $P < 0.0001$ ; Fig. 3). Notably, Ras mutations were not associated with inferior outcome in this cohort (5 year EFS  $89.7 \pm 4.2\%$  for 62 cases with Ras mutations compared with  $76.2 \pm 4.4\%$  for 112 cases without, log rank test,  $P = \text{NS}$ ). Through multivariable analysis with the Cox proportional-hazards regression model<sup>10</sup>, *MEF2D* rearrangements were not significantly associated with poor outcome following correction for age ( $\geq 10$  years unfavourable,  $P = 0.0034$ ), MRD positivity ( $P < 0.0001$ ), peripheral blood leukocyte count ( $\geq 100 \text{ mm}^{-3}$  unfavourable,  $P = 0.0067$ ) and sex ( $P = \text{NS}$ ). Further analysis of larger cohorts of *MEF2D*-rearranged cases will be required to determine whether this subset is independently associated with poor outcome.

**Deregulation of expression of *MEF2D* target genes.** The clustering of gene expression profiling data of *MEF2D*-rearranged

cases with this diverse range of partner genes strongly suggests the fusions exert similar oncogenic effects. All fusions preserve the *MEF2D* MADS-box domain that mediates DNA binding and potentially dimerization. Thus, aberrant function mediated by *MEF2D* transcriptional activation is likely to be central in leukaemogenesis. To examine this, we performed transcriptional activation assays in which the ability of *MEF2D* fusion proteins, wild-type *MEF2D* and *BCL9*, and the rearranged *N* terminus of *MEF2D* to activate transcriptional targets were examined. This showed that each *MEF2D* fusion protein was significantly more potent in activating expression than wild-type *MEF2D*, and that truncated *MEF2D* was inactive (Fig. 4a). Thus, each fusion partner stabilizes and augments *MEF2D* transcriptional activation. In colony-forming assays, *MEF2D-BCL9* sustained serial replating of lymphoid colonies, indicating that this fusion confers haematopoietic self-renewal (Fig. 4b).

**Sensitivity to HDAC inhibition.** The poor outcome of *MEF2D*-rearranged ALL suggests that new therapeutic approaches directed against deregulated cellular pathways observed in this form of leukaemia are warranted. To explore this, we established xenografts of leukaemic cells of five cases with *MEF2D*-rearranged ALL engrafted in immunocompromised mice. Following engraftment, leukaemic cells were harvested from the bone marrow and spleen, purified and exposed to chemotherapeutic agents *ex vivo*. This demonstrated sensitivity to the HDAC inhibitor panobinostat (but little sensitivity to *BCL9* inhibitors), suggesting HDAC inhibition as a therapeutic option in this high-risk form of leukaemia (Fig. 4c and Supplementary Fig. 16a–d). Although HDAC inhibitors such as panobinostat are broadly active in many haematopoietic tumours, including ALL<sup>11</sup> (data for non-*MEF2D* ALL subtypes are shown in Supplementary



**Figure 4 | Luciferase and drug-sensitivity assays.** (a) Luciferase assay to test MEF2 binding activities. The average levels of normalized luciferase activities  $\pm$  s.d. from six replicates are indicated. MEF2D-rearranged isoforms are more potent transcriptional activators than wild-type and truncated MEF2D. (b) Colony-forming assay for retroviral vectors transduced lineage negative bone marrow cells. Colony number counted from three replicate dishes is shown in mean  $\pm$  s.d. Western blotting was performed to verify expression of proteins by each construct (Supplementary Fig. 18). RLU, relative luminescence units; MIG, MSCV-IRES-GFP, represents empty vector; MEF2D-WT, vectors express wild-type MEF2D; MEF2D $\Delta$ , truncated MEF2D; BCL9-WT, wild-type BCL9; M/B-1 through M/B-3, three most common MEF2D-BCL9 fusion isoforms; M/H, MEF2D-HNRNPUL1. (c) *Ex vivo* drug sensitivity assays from two xenografted samples. Four chemical compounds including ABT-199 (selective BCL-2 inhibitor), vincristine and two HDAC inhibitors (panobinostat and vorinostat) were applied to measure growth inhibition curves in xenografted samples. The MEF2D rearrangements were confirmed in xenografted samples by RT-PCR and three more xenografted samples were also tested by the four drugs (Supplementary Fig. 16). Error bars represent mean  $\pm$  s.d.

Fig. 17) and are being explored as a therapeutic option for a range of relapsed and refractory tumours, we observed exquisite sensitivity in MEF2D-rearranged ALL (Fig. 4c). In contrast, and consistent with a lack of activation of  $\beta$ -catenin signalling from MEF2D-BCL9 fusions, we observed a lack of efficacy of selective, potent BCL9 inhibitors<sup>12</sup> *ex vivo* (Supplementary Fig. 16e–h).

## Discussion

The distinct gene expression profile, tumour cell immunophenotype, older age of onset and poor outcome of MEF2D-rearranged ALL cases together suggest that MEF2D-rearranged ALL represents a biologically distinct form of leukaemia. The fusion partners of MEF2D have a diverse range of biological functions. MEF2D is a member of a family of four myocyte enhancer factor transcription factors with an important role in neuronal differentiation<sup>13,14</sup>. MEF2D is expressed throughout B-cell differentiation<sup>15</sup> and inactivation of *Mef2c/d* results in an arrest in B-lymphoid maturation at the pre-B-cell stage<sup>15,16</sup>. BCL9 is located on chromosome 1q21 and was first identified as the target of a t(1;14)(q21;q32) IGH-BCL9 rearrangement in the pre-B-cell leukaemia cell line CEMO-1 (refs 5,17). Although IGH is rearranged to a variety of cytokine receptors and transcription factor genes in ALL, including CRLF2, EPOR and members of the CEBP family of transcription factors<sup>18–21</sup>, and multiple known and novel IGH rearrangements, were identified (Supplementary Data 1), none of the BCL9 rearrangements identified in this study involved IGH. BCL9 is a component of the WNT/ $\beta$ -catenin signalling cascade that has important roles in development, stem cell self-renewal and oncogenesis. BCL9 is part of the nuclear

complex consisting of T-cell factor/lymphoid enhancer factor,  $\beta$ -catenin, BCL9/BCL9L and PYGO, which activates transcription of canonical WNT target genes such as *FGF20*, *DKK1*, *WISP1*, *MYC*, *CCND1* and *GCG* (Glucagon)<sup>22,23</sup>. BCL9 has also been shown to have an oncogenic role in multiple myeloma<sup>24</sup>.

The MEF2D-BCL9 rearrangement results in deregulated expression of the C terminus BCL9 expression (Supplementary Fig. 2), raising the possibility that these fusions may perturb WNT/ $\beta$ -catenin signalling. However, the MEF2D-BCL9 rearrangements involve only the last one or two of ten exons of BCL9 exons resulting in loss of the BCL9 domains that mediate interaction with PYGO1 and  $\beta$ -catenin, consistent with the lack of enrichment of WNT/ $\beta$ -catenin signalling in the gene expression profile of MEF2D-rearranged ALL. Thus, IGH-BCL9 and MEF2D-BCL9 probably exert different roles in leukaemic transformation. DAZAP1 is located at 19p13.3 and encodes an RNA-binding protein that interacts with the infertility factors DAZ and DAZL, and other RNA-binding proteins<sup>25</sup>. The MEF2D-DAZAP1 rearrangement has previously been identified and shown to result in proliferation of fibroblasts<sup>26,27</sup>. HNRNPUL1 encodes a nuclear RNA-binding protein of the heterogeneous nuclear ribonucleoprotein family that may exert a role in nucleocytoplasmic RNA transport and DNA repair<sup>28</sup>. SS18 is fused with SSX1 or SSX2 in synovial sarcoma, and has putative roles in chromatin remodelling and WNT/ $\beta$ -catenin signalling<sup>29,30</sup>. FOXJ2 is a transcription factor that has been reported to affect migration and invasiveness of various tumours<sup>31,32</sup> but, unlike other forkhead transcription factor genes, has not previously been identified as a target of rearrangement in cancer.



These data demonstrate the power of transcriptome sequencing to identify novel rearrangements that define new genetic subtypes of ALL. The finding of *MEF2D* rearrangements as a hallmark of a subtype of ALL with a distinct gene expression profile provides another example of ALL subtypes that are cryptic (in this case, due to the common involvement of rearrangement of two genes co-located on one chromosome) and represented by rearrangement to diverse partners rather than a single fusion observed in other subtypes of ALL. Despite the common involvement of the WNT co-factor BCL9, there was no evidence of dysregulated WNT/ $\beta$ -catenin signalling in leukaemogenesis. In contrast, deregulated MEF2D activity, with activation of *HDAC9* and resulting inhibition of MEF2C were characteristic of this form of leukaemia. Further studies are required to dissect the relative role of MEF2D and partner gene involvement in leukaemogenesis, but our existing data suggest the potential for HDAC inhibition in this form of leukaemia.

## Methods

**Patients and samples.** Patients with ALL were enrolled on Alliance—Cancer and Leukemia Group B, COG, City of Hope, Eastern Cooperative Oncology Group, MD Anderson Cancer Center, Medical Research Council UK, Northern Italian Leukemia Group, Southwestern Oncology Group and University of Toronto Protocols (Supplementary Data 1). Patients and/or guardians provided informed consent/assent. The study was approved by the St. Jude Children's Research Hospital Institutional Review Board. Leukaemic cells from bone marrow aspirates obtained at diagnosis were processed by density gradient centrifugation. Samples of <70% tumour cell content were purified by fluorescence-activated cell sorting before RNA extraction.

**Transcriptome sequencing and data analysis.** Transcriptome sequencing was performed using TruSeq library preparation and HiSeq 2000 and 2500 sequencers. All sequencing was paired end and was performed using (1) total RNA and stranded RNA sequencing (100 bp reads), and (2) polyA-selected mRNA (100 or 75 bp reads). Sequencing reads were mapped to the GRCh37 human genome reference by STAR<sup>33</sup> (version 2.5.1b) through the two pass mapping pipeline. Gene annotation downloaded from Ensembl website (<http://www.ensembl.org/>) was used for STAR mapping and the following reads count evaluation. Cicero<sup>3</sup> and FusionCatcher<sup>34,35</sup> were used to detect fusions.

To assess gene expression profile, reads count for each annotated gene was extracted by HTSeq package<sup>36</sup> and gene expression level normalization and differential expression analysis was carried out by using DESeq2 bioconductor R package<sup>37</sup>. To evaluate the relative gene expression level, regularized log-transformed (rlog) value was calculated by DESeq2.

Gene expression profile between samples with and without *MEF2D* fusions were examined in two ALL cohorts. These included a cohort of total stranded RNAseq (30-fold coverage on exon regions (D30C) > 20%) and cases with unstranded mRNA sequencing (D30C > 30%). Two *MEF2D*-rearranged cases failed to meet the requirement of D30C > 20% were excluded, both of which were sequenced by unstranded 75 bp paired end protocol. Two hundred and nineteen samples were available for gene expression profiling analysis, including 95 samples with total stranded RNAseq (this cohort was enriched for Ph-like ALL and included 8 cases with *MEF2D* fusions) and 124 samples with unstranded RNAseq (enriched for other B-ALL and included 12 cases with *MEF2D* fusions) data are available for the gene expression profiling and gene signature analysis.

**GSEA and pathway analysis.** Normalized gene expression levels were evaluated from RNAseq data and subjected to DESeq2 for differential gene expression analysis. As recommended from GSEA<sup>38</sup>, genes ranked according to the significance of differential gene expression levels between samples with and without target rearrangements and then input to GSEA to calculate potentially enriched gene sets from a homemade gene sets database. To assess the pathway enrichment, genes with *P*-value  $\leq 0.01$  and fold change  $\geq 2$  were selected to run DAVID pathway analysis<sup>39</sup>.

**Mutation detection from RNAseq data.** The mutations were called according the GATK<sup>40</sup> forum recommended pipeline for calling variant in RNAseq data (<http://gatkforums.broadinstitute.org/gatk/discussion/3891/calling-variants-in-rnaseq>). Specifically, STAR mapped bam files were processed by Picard (<http://broadinstitute.github.io/picard>) to mark duplicate reads, then a GATK module SplitNCigarReads was used to splits reads into exon segments and hard-clip any sequences overhanging into the intronic regions. Variant calling was performed by the HaplotypeCaller module in GATK and then the variants were quality controlled by the following steps: (1) at least three reads support the mutation and the mutant allele frequency is  $\geq 0.05$ ; (2) not observed in common

SNP database (from UCSC version 142); and (3) not observed in  $\geq 2$  samples from our germline exome sequence cohort (775 samples). After filtering, all the mutations were annotated to genes according to their genomic positions. Non-silent mutations were compared with COSMIC somatic mutation database (GRCh37-V74) and the overlapped cancer relevant genes (<http://cancer.sanger.ac.uk/census>) were kept for further analysis.

**Retroviral constructs and immunoblotting.** *MEF2D*-rearranged isoforms, wild-type *MEF2D* and *BCL9* were amplified by RT-PCR using Phusion High-Fidelity DNA Polymerase (M0530L, New England Biolabs, Inc.) and primers (Supplementary Table 5) from either leukaemic cell or MOLT4 cell line complementary DNA. Amplification products were purified by Wizard SV Gel and PCR Clean-up system (Promega) and verified by Sanger sequencing. Purified PCR products were cloned into pCR-Blunt II-TOPO (Life Technologies) and sub-cloned into the murine stem cell virus-internal ribosome entry site-green fluorescent protein (MSCV-IRES-GFP) retroviral vector.

Truncated *MEF2D* isoform was amplified from MSCV-*MEF2D*-*BCL9*-IRES-GFP vector (M/B-1 vector, the one with the most common *MEF2D*-*BCL9* fusion isoform) by the same PCR system and specially designed primers for Gateway cloning (Vector NTI, Thermo Fisher) (Supplementary Table 5). Primers for truncated *MEF2D* were designed to amplify from the N terminus of *MEF2D* to the last amino acid fused to *BCL9* with a stop codon inserted at the fusion point. Purified PCR products were cloned into the Gateway pDONR221 vector (Thermo Fisher) by BP Clonase Enzyme (Thermo Fisher). Truncated *MEF2D*-pDONR221 vector was shuttled into a Gateway-compatible MSCV-IRES-GFP vector using the LR Clonase enzyme (Thermo Fisher). Constructs were verified by Sanger sequencing (Supplementary Table 5).

Transfected/transduced cells and human leukaemic cells were lysed in RIPA buffer supplemented with phosphatase inhibitors (Sigma) and 30  $\mu$ g protein of patient samples (15  $\mu$ g of lysate from NIH-3T3 cells) electrophoresed through 4–12% NuPage Bis-Tris gels (Life Technologies) at 190 V for 80 min. Blots were probed with anti-MEF2D (H-57, sc-366368), anti-actin (I-19) (both, Santa Cruz Technologies) and anti-BCL9 (Abcam ab54833). For human leukaemic cells, 1:250, 1:500 and 1:2,000 dilutions were used for MEF2D, BCL9 and  $\beta$ -actin antibodies, respectively; for transfected/transduced cells, the 3 antibodies were 1:1,000 diluted. Five percent BSA in Tris-buffered saline with 0.1% Tween 20 solution was used to dilute the antibodies.

**Luciferase assays.** In 96-well dishes,  $2 \times 10^4$  293T cells were transfected with 0.04 pmols of MSCV-IRES-GFP (MIG) vectors expression wild-type MEF2D, truncated MEF2D (MEF2DA), wild-type BCL9, three most common MEF2D-BCL9 fusion isoforms, MEF2D-HNRPULL1 or empty vector along with 250 ng of a 3XMEF2 firefly luciferase reporter construct (Addgene plasmid #32967) and 50 ng of a pRL-TK *Renilla* luciferase reporter plasmid (Promega) using FuGene HD (Roche Diagnostics). Forty-eight hours after transfection, measurement of firefly and *Renilla* luciferase activity was performed using the Dual-Glo Luciferase Assay System (Promega E2920) according to the manufacturer's instructions. All transfections were performed with six technical replicates in two independent experiments. Firefly luciferase activity was normalized according to corresponding *Renilla* luciferase activity and reported as TBS-T  $\pm$  s.d. from one representative experiment.

**Generation of xenografted mice.** One million patient-derived leukaemic cells were transplanted into three mice each by tail vein injection into 8–10-week-old sublethally irradiated (250 rads) female immunodeficient NOD.Cg-*Prkdc*<sup>scid</sup>*Il2rg*<sup>tm1Wjl/SzJ</sup> (NSG) mice. Disease progression was monitored by flow cytometric analysis of peripheral blood cells stained for mCD45, hCD45, hCD19 and hCD7, and the bone marrow and spleen were harvested when >80% of hCD45 + hCD19 + cells observed in peripheral blood. Mice were housed in an American Association of Laboratory Animal Care-accredited facility and were treated on Institutional Animal Care and Use Committee-approved protocols in accordance with NIH guidelines. The study was approved by institutional review board of St Jude Children's Research Hospital.

**Ex vivo drug sensitivity assays.** Human xenograft cells were flushed from tibiae and femora of moribund mice, subjected to red cell lysis, washed and immediately plated  $1 \times 10^5$  per well in 96-well plates containing media with the indicated concentrations of compounds in triplicate. Cells were treated for 48 h, incubated with resazurin for 4 h and read on a Synergy HT (Biotek).

**Colony-forming assays.** Bone marrow from 10-week-old C57Bl/6 wild-type mice was extracted from the tibiae and femora. Red blood cells were lysed and the remaining bone marrow cells were incubated with a cocktail of biotinylated anti-mouse antibodies (Gr-1, B220, Ly-1, Ter119, Mac-1, diluted 1:100 in PBS with 5% rat serum and 5% FCS; BD Biosciences) followed by mixing with streptavidin-coated beads (Dynabeads M-280 Streptavidin; Life Technologies). Cells were separated on a magnet and unbound cells were collected and incubated at 37 °C, 8% CO<sub>2</sub> for 2 days in the presence of interleukin (IL)-3, IL-6, stem cell factor

(SCF), IL-7 and Flt3 cytokines (Peprotech). Cells were retrovirally transduced with empty MSCV-IRES-GFP (MIG) and MSCV-MEF2D-BCL9-IRES-GFP (M/B-1) vectors on RetroNectin (Takara Bio) for 48 h before sorting for GFP-positive cells (BD FACSAria II, BD Biosciences). For clonogenic assays, 10,000 cells were plated in triplicate in Methocult M3231 (Stem Cell Technologies, Inc.) with the appropriate factors (stem cell factor, 100 ng ml<sup>-1</sup>; FLT-3 ligand, 10 ng ml<sup>-1</sup>; IL-7, 20 ng ml<sup>-1</sup>) and colonies were scored 7 days later. For re-plating, 10,000 cells were cultured in identical conditions, with colonies counted on day 7–10.

**FISH analysis.** FISH analysis was performed to confirm chromosomal rearrangements. As previously described<sup>3,41</sup>, all assays were performed as sequential hybridization events first using the 5'- and 3'-target gene-specific probes in different colours, to demonstrate the presence or absence of intragenic disruption. Imaging was performed following the first hybridization and slide coordinates were recorded. A second hybridization was then performed using the appropriate 5'-promoter probe and a second set of images were then made of the previously imaged cells. To confirm MEF2D-BCL9 rearrangements, sequential probing for MEF2D and BCL9 was performed using probes prepared from clones RP11-16P22 (MEF2D 5'), RP11-959J12 (MEF2D 3') and CH17-105C9 (BCL9 3'); to test IGH-BCL9 fusions, sequential probing for IGH enhancer and BCL9 was carried out by using probes from RP5-998D24 (IGH enhancer) and CH17-105C9 (BCL9 3').

**Statistical analysis.** Associations between ALL subtype and treatment outcome (EFS and overall survival) were performed using the Kaplan–Meier estimator with Peto's estimator of s.d. and the log-rank test<sup>42–44</sup>. Analyses were performed using Prism v6.0 (GraphPad), R (www.r-project.org)<sup>45</sup> and SAS (v9.1.2, SAS Institute, Cary, NC).

**Data availability.** Genome and RNAseq data are deposited at the European Genome Phenome archive, accession EGAS00001000654 (ref. 3), EGAS00001001952 and the database of Genotypes and Phenotypes (dbGaP) under accession code phs000463. Data derived from COG samples, including gene expression and SNP microarray data, may also be accessed through the Therapeutically Applicable Research to Generate Effective Treatments data matrix (https://ocg.cancer.gov/programs/target). The remaining data are available within the article and its Supplementary Files or available from the authors upon request.

## References

- Hunger, S. P. & Mullighan, C. G. Redefining ALL classification: toward detecting high-risk ALL and implementing precision medicine. *Blood* **125**, 3977–3987 (2015).
- Hunger, S. P. & Mullighan, C. G. Acute lymphoblastic leukemia in children. *N. Engl. J. Med.* **373**, 1541–1552 (2015).
- Roberts, K. G. *et al.* Targetable kinase-activating lesions in Ph-like acute lymphoblastic leukemia. *N. Engl. J. Med.* **371**, 1005–1015 (2014).
- Moorman, A. V. The clinical relevance of chromosomal and genomic abnormalities in B-cell precursor acute lymphoblastic leukaemia. *Blood Rev.* **26**, 123–135 (2012).
- Willis, T. G. *et al.* Molecular cloning of translocation t(1;14)(q21;q32) defines a novel gene (BCL9) at chromosome 1q21. *Blood* **91**, 1873–1881 (1998).
- Gu, T. L. *et al.* A novel fusion of RBM6 to CSF1R in acute megakaryoblastic leukemia. *Blood* **110**, 323–333 (2007).
- Roberts, K. G. *et al.* Outcomes of children with BCR-ABL1-like acute lymphoblastic leukemia treated with risk-directed therapy based on the levels of minimal residual disease. *J. Clin. Oncol.* **32**, 3012–3020 (2014).
- Harvey, R. C. *et al.* Identification of novel cluster groups in pediatric high-risk B-precursor acute lymphoblastic leukemia with gene expression profiling: correlation with genome-wide DNA copy number alterations, clinical characteristics, and outcome. *Blood* **116**, 4874–4884 (2010).
- Haberland, M. *et al.* Regulation of HDAC9 gene expression by MEF2 establishes a negative-feedback loop in the transcriptional circuitry of muscle differentiation. *Mol. Cell Biol.* **27**, 518–525 (2007).
- Cox, D. Regression models and life-tables. *J. R. Stat. Soc.* **34**, 187–220 (1972).
- Mullighan, C. G. *et al.* CREBBP mutations in relapsed acute lymphoblastic leukaemia. *Nature* **471**, 235–239 (2011).
- Hoggard, L. R. *et al.* Rational design of selective small-molecule inhibitors for beta-catenin/B-cell lymphoma 9 protein-protein interactions. *J. Am. Chem. Soc.* **137**, 12249–12260 (2015).
- Yang, Q. & Mao, Z. Dysregulation of autophagy and Parkinson's disease: the MEF2D link. *Apoptosis* **15**, 1410–1414 (2010).
- Mao, Z., Bonni, A., Xia, F., Nadal-Vicens, M. & Greenberg, M. E. Neuronal activity-dependent cell survival mediated by transcription factor MEF2. *Science* **286**, 785–790 (1999).
- Heng, T. S. & Painter, M. W. The Immunological Genome Project: networks of gene expression in immune cells. *Nat. Immunol.* **9**, 1091–1094 (2008).
- Herglotz, J. *et al.* Essential control of early B-cell development by Mef2 transcription factors. *Blood* **127**, 572–581 (2016).
- Silva, M. L. *et al.* Establishment of a new human pre-B leukemia cell line (CEMO-1) with the translocation (1;14)(q21;q32). *Leukemia* **10**, 575–577 (1996).
- Dyer, M. J. *et al.* Immunoglobulin heavy chain (IGH) locus chromosomal translocations in B-cell precursor acute lymphoblastic leukemia (BCP-ALL): rare clinical curios or potent genetic drivers? *Blood* **115**, 1490–1499 (2009).
- Russell, L. J. *et al.* Deregulated expression of cytokine receptor gene, CRLF2, is involved in lymphoid transformation in B-cell precursor acute lymphoblastic leukemia. *Blood* **114**, 2688–2698 (2009).
- Mullighan, C. G. *et al.* Rearrangement of CRLF2 in B-progenitor- and Down syndrome-associated acute lymphoblastic leukemia. *Nat. Genet.* **41**, 1243–1246 (2009).
- Iacobucci, I. *et al.* Truncating erythropoietin receptor rearrangements in acute lymphoblastic leukemia. *Cancer Cell* **29**, 186–200 (2016).
- Sampietro, J. *et al.* Crystal structure of a  $\beta$ -catenin/BCL9/Tcf4 complex. *Mol. Cell* **24**, 293–300 (2006).
- Katoh, M. & Katoh, M. WNT signaling pathway and stem cell signaling network. *Clin. Cancer Res.* **13**, 4042–4045 (2007).
- Mani, M. *et al.* BCL9 promotes tumor progression by conferring enhanced proliferative, metastatic, and angiogenic properties to cancer cells. *Cancer Res.* **69**, 7577–7586 (2009).
- Yang, H. T., Peggie, M., Cohen, P. & Rousseau, S. DAZAP1 interacts via its RNA-recognition motifs with the C-termini of other RNA-binding proteins. *Biochem. Biophys. Res. Commun.* **380**, 705–709 (2009).
- Prima, V. *et al.* Cloning and functional characterization of MEF2D/DAZAP1 and DAZAP1/MEF2D fusion proteins created by a variant t(1;19)(q23;p13.3) in acute lymphoblastic leukemia. *Leukemia* **19**, 806–813 (2005).
- Prima, V. & Hunger, S. P. Cooperative transformation by MEF2D/DAZAP1 and DAZAP1/MEF2D fusion proteins generated by the variant t(1;19) in acute lymphoblastic leukemia. *Leukemia* **21**, 2470–2475 (2007).
- Polo, S. E. *et al.* Regulation of DNA-end resection by hnRNPU-like proteins promotes DNA double-strand break signaling and repair. *Mol. Cell* **45**, 505–516 (2012).
- Tamaki, S. *et al.* SS18-SSX, the oncogenic fusion protein in synovial sarcoma, is a cellular context-dependent epigenetic modifier. *PLoS ONE* **10**, e0142991 (2015).
- Trautmann, M. *et al.* SS18-SSX fusion protein-induced Wnt/beta-catenin signaling is a therapeutic target in synovial sarcoma. *Oncogene* **33**, 5006–5016 (2014).
- Qiang, Y. *et al.* Abnormal expression of Forkhead Box J2 (FOXJ2) suppresses migration and invasion in extrahepatic cholangiocarcinoma and is associated with prognosis. *Int. J. Oncol.* **46**, 2449–2458 (2015).
- Wang, Y. *et al.* Overexpression of forkhead box J2 can decrease the migration of breast cancer cells. *J. Cell Biochem.* **113**, 2729–2737 (2012).
- Dobin, A. *et al.* STAR: ultrafast universal RNA-seq aligner. *Bioinformatics* **29**, 15–21 (2013).
- Nicorici, D. *et al.* Fusion Catcher—a tool for finding somatic fusion genes in paired-end RNA-sequencing data. Preprint at bioRxiv <http://dx.doi.org/10.1101/011650> (2014).
- Edgren, H. *et al.* Identification of fusion genes in breast cancer by paired-end RNA-sequencing. *Genome Biol.* **12**, R6 (2011).
- Anders, S., Pyl, P. T. & Huber, W. HTSeq—a Python framework to work with high-throughput sequencing data. *Bioinformatics* **31**, 166–169 (2015).
- Anders, S. & Huber, W. Differential expression analysis for sequence count data. *Genome Biol.* **11**, R106 (2010).
- Subramanian, A. *et al.* Gene set enrichment analysis: a knowledge-based approach for interpreting genome-wide expression profiles. *Proc. Natl Acad. Sci. USA* **102**, 15545–15550 (2005).
- Huang da, W., Sherman, B. T. & Lempicki, R. A. Systematic and integrative analysis of large gene lists using DAVID bioinformatics resources. *Nat. Protoc.* **4**, 44–57 (2009).
- McKenna, A. *et al.* The Genome Analysis Toolkit: a MapReduce framework for analyzing next-generation DNA sequencing data. *Genome Res.* **20**, 1297–1303 (2010).
- Roberts, K. G. *et al.* Genetic alterations activating kinase and cytokine receptor signaling in high-risk acute lymphoblastic leukemia. *Cancer Cell* **22**, 153–166 (2012).
- Mullighan, C. G. *et al.* Deletion of IKZF1 and prognosis in acute lymphoblastic leukemia. *N. Engl. J. Med.* **360**, 470–480 (2009).
- Mantel, N. Evaluation of survival data and two new rank order statistics arising in its consideration. *Cancer Chemother. Rep.* **50**, 163–170 (1966).
- Fine, J. P. & Gray, R. J. A proportional hazards model for the subdistribution of a competing risk. *J. Am. Stat. Assoc.* **94**, 496–509 (1999).
- R Core Team. R: A language and environment for statistical computing. R Foundation for Statistical Computing, Vienna, Austria. <https://www.R-project.org/> (2016).

## Acknowledgements

We thank Haitao Ji for providing BCL9 inhibitors. This work was supported in part by the American Lebanese Syrian Associated Charities of St. Jude Children's Research Hospital; by a Stand Up to Cancer Innovative Research Grant and St. Baldrick's Foundation Scholar Award (to C.G.M.); by a St. Baldrick's Consortium Award (S.P.H.), by a Leukemia and Lymphoma Society Specialized Center of Research grant (S.P.H. and C.G.M.), by a Lady Tata Memorial Trust Award (I.I.), by a Leukemia and Lymphoma Society Special Fellow Award and Alex's Lemonade Stand Foundation Young Investigator Awards (K.R.), by an Alex's Lemonade Stand Foundation Award (M.L.) and by National Cancer Institute Grants CA21765 (St Jude Cancer Center Support Grant), U01 CA157937 (C.L.W. and S.P.H.), U24 CA114737 (to Dr Gastier-Foster), NCI Contract HHSN261200800001E (to Dr Gastier-Foster), U10 CA180820 (ECOG-ACRIN Operations) and CA180827 (E.P.); U10 CA180861 (C.D.B. and G.M.); U24 CA196171 (The Alliance NCTN Biorepository and Biospecimen Resource); CA145707 (C.L.W. and C.G.M.); and grants to the COG: U10 CA98543 (Chair's grant and supplement to support the COG ALL TARGET project), U10 CA98413 (Statistical Center) and U24 CA114766 (Specimen Banking). This project has been funded in whole or in part with Federal funds from the National Cancer Institute, National Institutes of Health, under Contract Number HHSN261200800001E. The content of this publication does not necessarily reflect the views or policies of the Department of Health and Human Services, nor does mention of trade names, commercial products or organizations imply endorsement by the U.S. Government. We thank the staff of the Biorepository, the Hartwell Centre for Bioinformatics and Biotechnology, the Flow Cytometry and Cell Sorting Core Facility and the Cytogenetics Core Facility of St Jude Children's Research Hospital.

## Author contributions

Z.G., R.C.H., Y. Li. and Y. Liu analysed genomic data. Z.G., I.-M.C., M.C., K.M., I.I., D.P.-T., K.R., S.R. and E.S. performed experiments. M.V. performed fluorescence *in situ* hybridization. J.E., D.S.G., A.M., K. Mungall, M.M., R.M., Y.M. and Y.S. performed transcriptome sequencing. M.D. and Y.D. performed biostatistical analysis. M.B. and

B.W. performed immunophenotyping. E.L., K. Maloney, L.A.M., A.A., W.L.S., M.J.B., J. G.-F., A.R., O.S., J.P.R., M.D.M., A.V.M., B.P., A.K.F., J.M.R., S.L., R.B., I.A., J.K., K. Mrózek, G.M., C.D.B., W.S., S.K., H.M.K., M.K., W.P., C.L.W., M.L.L. and S.P.H. provided clinical samples and data. Z.G. and C.G.M. wrote the manuscript.

## Additional information

**Supplementary Information** accompanies this paper at <http://www.nature.com/naturecommunications>

**Competing financial interests:** The authors declare no competing financial interests.

**Reprints and permission** information is available online at <http://npg.nature.com/reprintsandpermissions/>

**How to cite this article:** Gu, Z. *et al.* Genomic analyses identify recurrent *MEF2D* fusions in acute lymphoblastic leukaemia. *Nat. Commun.* 7, 13331 doi: 10.1038/ncomms13331 (2016).

**Publisher's note:** Springer Nature remains neutral with regard to jurisdictional claims in published maps and institutional affiliations.



This work is licensed under a Creative Commons Attribution 4.0 International License. The images or other third party material in this article are included in the article's Creative Commons license, unless indicated otherwise in the credit line; if the material is not included under the Creative Commons license, users will need to obtain permission from the license holder to reproduce the material. To view a copy of this license, visit <http://creativecommons.org/licenses/by/4.0/>

© The Author(s) 2016