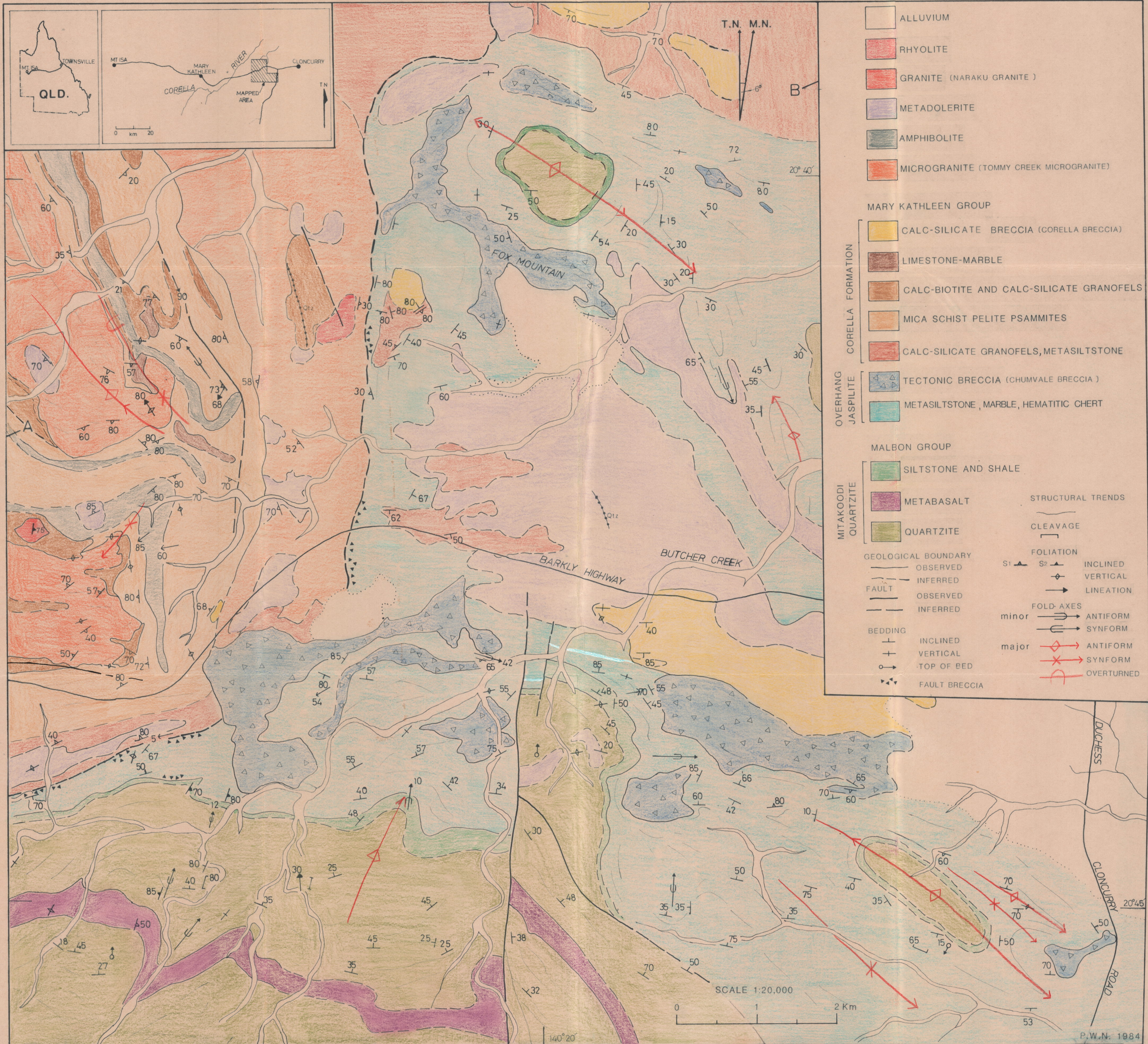


GEOLOGY OF THE FOX MOUNTAIN AREA NORTH WEST QUEENSLAND

FIGURE 1



- ALLUVIUM
 - RHYOLITE
 - GRANITE (NARAKU GRANITE)
 - METADOLERITE
 - AMPHIBOLITE
 - MICROGRANITE (TOMMY CREEK MICROGRANITE)
- MARY KATHLEEN GROUP**
- CALC-SILICATE BRECCIA (CORELLA BRECCIA)
 - LIMESTONE-MARBLE
 - CALC-BIOTITE AND CALC-SILICATE GRANOFELS
 - MICA SCHIST PELITE PSAMMITES
 - CALC-SILICATE GRANOFELS, METASILTSTONE
- CORELLA FORMATION**
- TECTONIC BRECCIA (CHUMVALE BRECCIA)
 - METASILTSTONE, MARBLE, HEMATITIC CHERT
- OVERHANG JASPIRITE**
- MALBON GROUP**
- SILTSTONE AND SHALE
 - METABASALT
 - QUARTZITE
- MITAKOODI QUARTZITE**
- STRUCTURAL TRENDS**
- CLEAVAGE
 - FOLIATION
 - S₁ INCLINED
 - S₂ VERTICAL
 - LINATION
 - FOLD-AXES
 - minor ANTIFORM
 - minor SYNFOLD
 - major ANTIFORM
 - major SYNFOLD
 - major OVERTURNED
- GEOLOGICAL BOUNDARY**
- OBSERVED
 - INFERRED
- FAULT**
- OBSERVED
 - INFERRED
- BEDDING**
- INCLINED
 - VERTICAL
 - TOP OF BED
- FAULT BRECCIA**

Section A-B

